



5F, No.371-1, Sec.2, Chung shan Road, Chung Ho, Taipei county

Taiwan 235

TEL : 886-2-82277070

FAX : 886-2-82277171

E-mail : lightop@anet.net.tw

**光 楠 科 技 股 份 有 限 公 司**  
**LIGHTOP TECHNOLOGY CO., LTD.**

**Data Sheet**

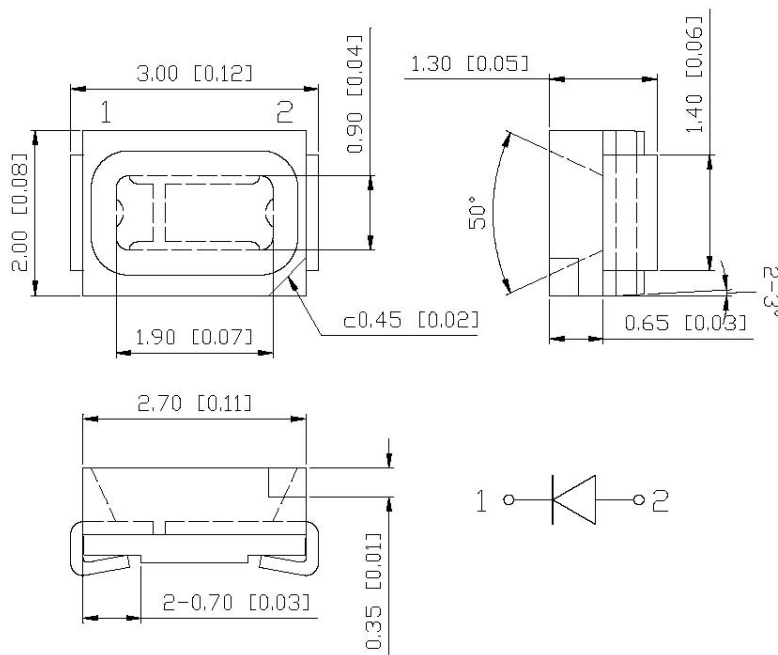


ACCEPTED BY	
QUALITY CONTROL BY	
CHECKED BY	
PREPARED BY	LUOFAXING

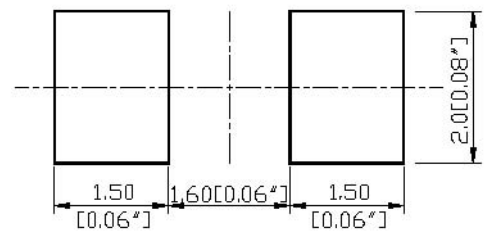
**Features:**

1. Low power consumption.
2. High intensity
3. Wide view angle
4. Chip Material: AlGaInP
5. Lens Color: Water Clear
6. Source Color: YELLOW

**Outline Dimensions:**



**\* Recommended Soldering Pattern For Reflow Soldering**



**Note :**

1. All dimensions are in millimeters (inches)
2. Tolerance is  $\pm 0.2\text{mm} (.008")$  unless otherwise noted
3. Specifications are subject to change without notices.

**Absolute Maximum Ratings at Ta=25°C :**

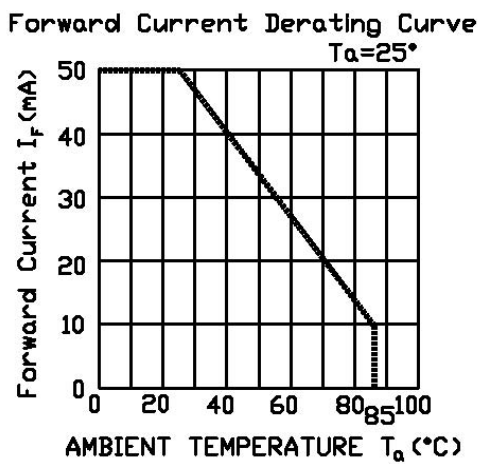
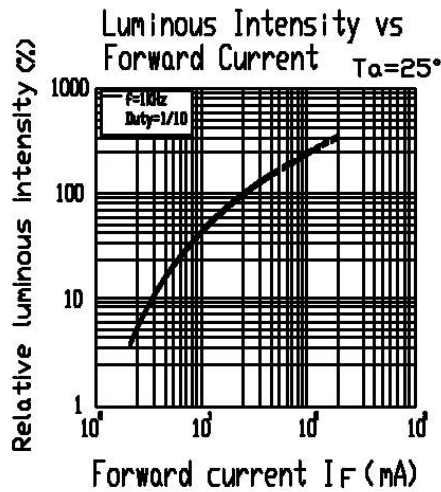
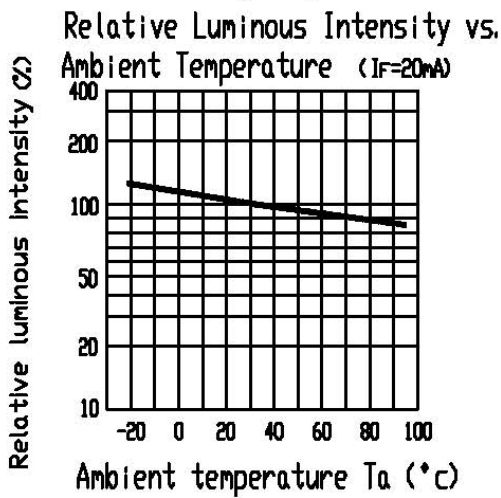
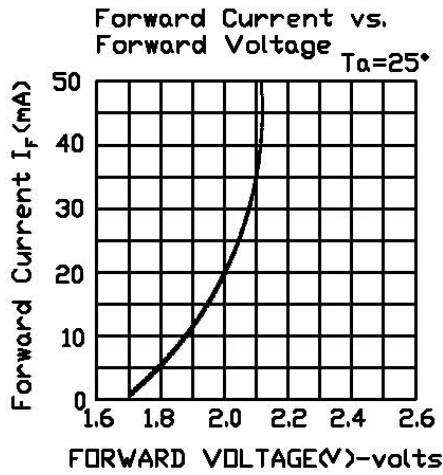
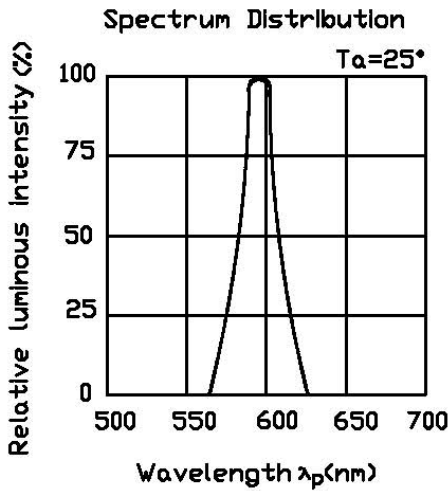
Parameter	Maximum	Unit
Power Dissipation	80	mW
Peak Forward Current (1/10 Duty Cycle,0.1ms Pulse Width)	100	mA
Continuous Forward Current	25	mA
Derating Linear From 50°C	0.5	mA/°C
Reverse Voltage	5	V
Operating Temperature Range	-20°C to +65°C	
Storage Temperature Range	-30°C to +80°C	
Lead Soldering Temperature [1.6mm(0.63") from body]	260°C for 3 Seconds	

**Electrical/Optical Characteristics at Ta=25°C :**

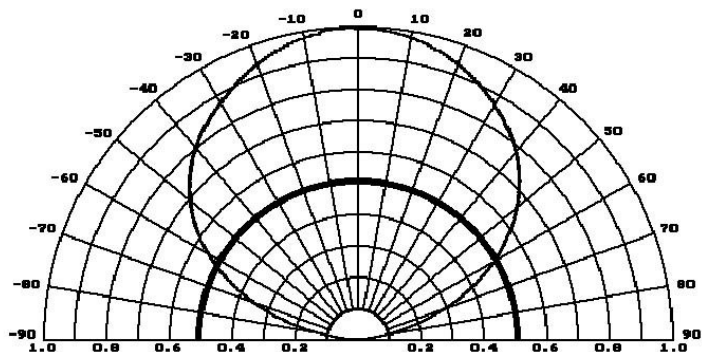
Parameter	Symbol	Test Condition	Min.	Typ.	Max.	Unit
Luminous Intensity	I <sub>v</sub>	I <sub>F</sub> =20mA		100		mcd
Dominant Wavelength	λ <sub>d</sub>	I <sub>F</sub> =20mA		595		nm
Viewing Angle	2 θ 1/2	I <sub>F</sub> =20mA		120		deg
Forward Voltage	V <sub>F</sub>	I <sub>F</sub> =20mA		1.9	2.4	V
Reverse Current	I <sub>R</sub>	V <sub>R</sub> =5V			10	uA

Typical Electrical/Optical Characteristics Curve:

(25°C Ambient Temperature Unless Otherwise Noted)

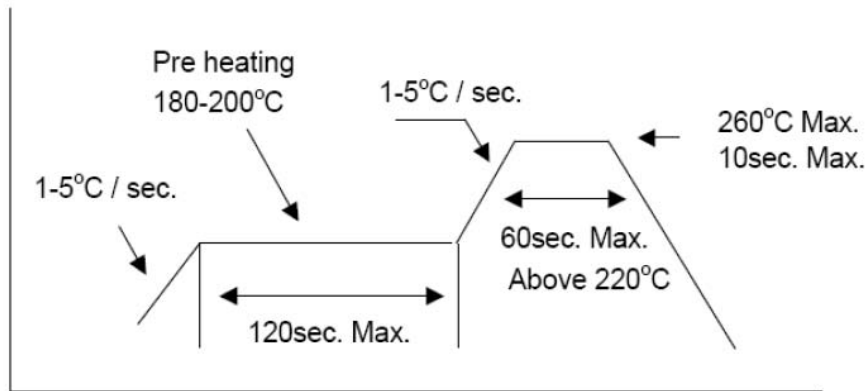


Directive Characteristics

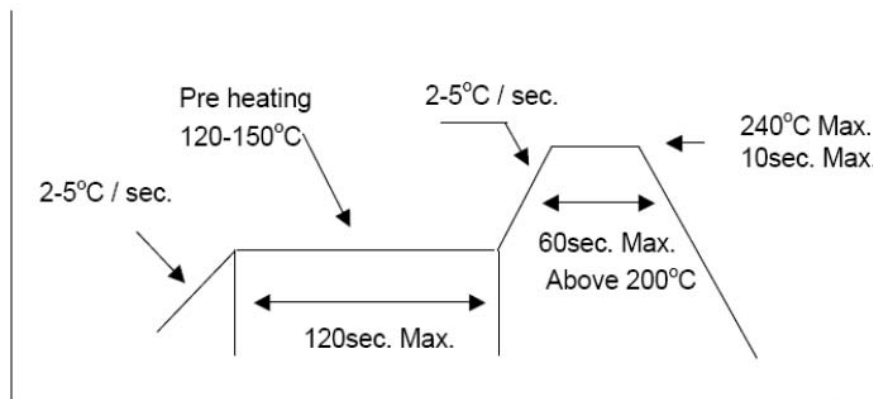


### IR Reflow Soldering Profile

Lead Free Solder



Lead Solder



### Reliability Test :

Item	Conditions	Hours/Cycle	Ac/Re
Operation Life	Ta=25°C, If=20mA	1000hrs	Power Decay<50%
High Temperature/ High Humidity	Ta=60±5°C, RH=90±5%	1000hrs	0 / 1
High Temperature Storage	Ta=100±5°C	1000hrs	0 / 1
Low Temperature Storage	Ta=-30±5°C	1000hrs	0 / 1
Temperature Cycling	100~25~-40~25°C 30~5~30~5 min	10 Cycles	0 / 1
Thermal Shock	H: 85±5°C(10min)~ L: -45±5°C(10min)	10 Cycles	0 / 1
Soldering Resistance	Ta=260±5°C,	10 sec	0 / 1